

Mask with Ties



Cut squares : Small 6.5 x 9.0 Lining, 7.5 x 9.0 Front
 Regular 7 x 9.0 Lining, 8 x 9.5 Front
 x-Large 7.5 x 10.5 Lining, 8.5 x 9.5 Front



Put lining and front piece right sides together. Sew $\frac{3}{8}$ " seam that is 2-2.5" long on each end. This will leave a 4-5" opening



Finger press or iron the seam open and top stitch down each side about $\frac{1}{4}$ " from the middle of the seam and the opening



Sew the bottom seam with $\frac{1}{4}$ " seam..

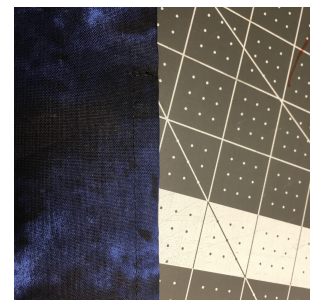
Turn and top stitch the bottom seam $\frac{1}{4}$ " from edge.



Optional:

Now you will make the pocket for the wire nosepiece. Measure and mark 1.5 - 2" from each end. Sew across one end to keep wire in place.

Sew a seam $\frac{1}{4}$ " from edge to the other mark. Lift presser foot and carefully insert wire with a small loop in each end. It should be at least $\frac{1}{2}$ " smaller than the box you are making. Carefully Sew the other end across to lock in the wire.



Lay your mask piece flat on the table. Mark on the lining fabric the center of each side. Mark 1.5" from the center mark to get 3 marks for your folds. Fold each outer mark to the center mark. Iron the mask to lock in the folds.

Pin and sew a very narrow seam ($\frac{1}{8}$ ") on each side to stabilize your folds. Mask is now ready to sew on binding and finish mask

Binding is 18" -19" long from edge of mask for all corner of the mask.
 (about 40" for each side of mask)